

Go to www.vtechbabycare.com to register your product for enhanced warranty support and latest VTech product news.

RM7766HD
RM7766-2HD
7" Smart Wi-Fi 1080p
Pan & Tilt Monitor



For more support information

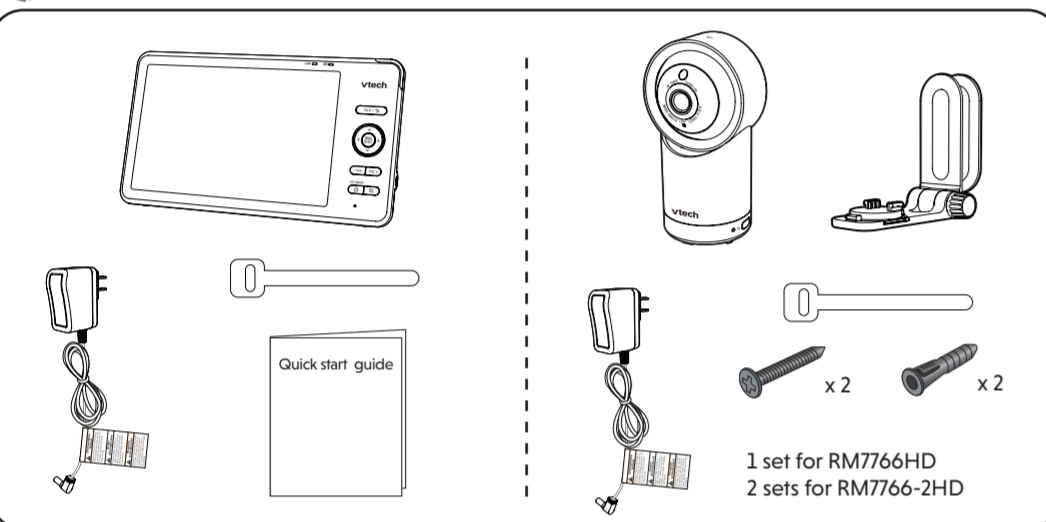


vtech
Quick start guide

Congratulations

on purchasing your new VTech product.
Before using this baby monitor, please read the **Important safety instructions**.

WHAT'S IN THE BOX



IMPORTANT SAFETY INSTRUCTIONS

- The applied nameplate is located at the bottom of the baby unit's base. When using your equipment, basic safety precautions should always be followed to reduce the risk of fire, electric shock and injury, including the following:
- Follow all warnings and instructions marked on the product.
 - Adult setup is required.
 - CAUTION:** Do not install the baby unit at a height above 6.5 feet (2 meters).
 - This product is intended as an aid. It is not a substitute for responsible and proper adult supervision and should not be used as such.
 - This product is not intended for use as a medical monitor.
 - Do not use this product near water, for example, near to a bath, sink, swimming pool or shower.
 - CAUTION:** Use only the internal, non-user replaceable battery fitted to the parent unit. There may be a risk of explosion if a wrong type of battery is used for the parent unit. The battery cannot be subjected to high or low extreme temperature and low air pressure at high altitude during use, storage or transportation. Disposal of battery in fire or a hot oven, mechanically crushing or cutting the battery can result in an explosion. Leaving the battery in an extremely high temperature surrounding environment can result in an explosion or the leakage of flammable liquid or gas. Battery subjected to extremely low air pressure may result in an explosion or the leakage of flammable liquid or gas. Dispose of used battery according to the information in **The RBRC seal**.
 - Use only the adapters included with this product. Incorrect adapter polarity or voltage can seriously damage the product.

- Power adapter information:**
Baby Unit Output: 5V DC 1.5A
VTech Telecommunications Ltd.
Model: VT07EU505150
- Rechargeable battery information:**
3.7V 5000mAh, 18.5Wh Lithium-ion battery
Zhuhai Great Power Energy Co., Ltd.
Model: GSP806909AH-3.7V-1S1P
- Precautions for users of implanted cardiac pacemakers**
Cardiac pacemakers (applies only to digital cordless devices): Wireless Technology Research, LLC (WTR), an independent research entity, led a multidisciplinary evaluation of the interference between portable wireless devices and implanted cardiac pacemakers. Supported by the U.S. Food and Drug Administration, WTR recommends to physicians that:
- Should keep wireless devices at least six inches from the pacemaker.
 - Should NOT place wireless devices directly over the pacemaker, such as in a breast pocket, when it is turned ON.
 - WTR's evaluation did not identify any risk to bystanders with pacemakers from other persons using wireless devices.
- Electromagnetic fields (EMF)**
This VTech product complies with all standards regarding electromagnetic fields (EMF), if handled properly and according to the instructions in this user's manual, the product is safe to be used based on scientific evidence available today.

CONNECT, CHARGE AND POWER ON THE BABY MONITOR

- Connect the Parent Unit and Baby Unit to the adapter and mains supply.
- Slide the switch to ON to power on the Baby Unit.
The Parent Unit turns on automatically after connection to the power socket.
- For optimum reception, raise the parent unit antenna.

NOTES

- Please peel off the lens/screen protector before use.
- Charge the parent unit battery before use.
- When powering up, the baby unit's orange status LED turns on. It will turn off after a while and remain off if the status LED is set to off.
- The status LED is set to off by default. You can turn it on using the app (Setting > Camera Setting > LED status).
- The baby unit may get warm during use. This is normal.

DOWNLOAD APP FOR MOBILE ACCESS

Use the **MyVTech Baby Plus** on your mobile device to monitor your baby remotely. Follow the instructions below to set up and pair your baby monitor with the app.

- Scan the QR code to download the free **MyVTech Baby Plus** mobile app, or search "MyVTech Baby Plus" on App Store or Google Play Store. If you have previously installed the app, ensure that you have the latest version.
- Tap **GET IT ON** to launch the mobile app on your device and create an account.
- We recommend that you use common webmail services, such as Google Gmail, to register your user account. Check your email (including the Spam folder) and activate your new account by entering the email verification code. Then, sign in to your account.
- Ensure that you are connected to a **2.4GHz Wi-Fi network** and have enabled **Bluetooth and Location Service** on your device.
- After signing in to the app, select **Camera(s) with Parent unit** and scan the QR code displayed on the parent unit. To find the QR code, press the **MENU/SELECT** button and go to **Settings > Connect to Mobile App**.
- Input the Wi-Fi password.
- Press and hold the pair key on the baby unit for 3 seconds until you hear the beep sound to enter pairing mode.
- Select the camera model that appears in the app and wait for the camera to connect. Once connected, it will display a live view preview.
- Select **"Continue"** and create a profile for your baby (optional). Now you can start monitoring! (For models with 2 cameras, a pop-up will ask if you wish to connect another camera. Repeat steps 7-9 for the second camera.)

Tip
Use **Camera Sharing** to instantly share access to the camera. Follow these steps:

- Go to **Menu** and select **Camera Sharing**.
- Choose **"Invite People"** and enter the name and email address of the family member's app account.
- The family member will receive a pop-up notification in the app and can accept the invitation to access the camera(s).

HOW THE SYSTEM WORKS

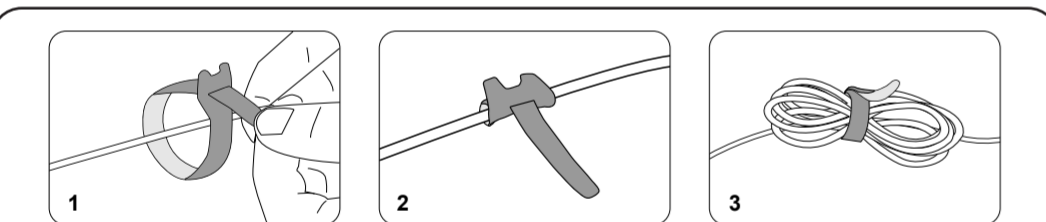
Tip To receive product firmware updates, this baby monitor requires connecting to a **2.4GHz home Wi-Fi network**.

Direct mode
Your baby monitor parent unit and baby unit connect to each other in **Direct mode** by default, which allows you to immediately stream video out of the box.

Wi-Fi mode
To enhance your experience and enjoy seamless live video streaming via your mobile app, and to receive product software updates (when available), we highly recommend setting up your monitor's Wi-Fi connection.

To stream live video remotely through your mobile device, download and install the **MyVTech Baby Plus** mobile app. With the mobile app, your Wi-Fi router (not included) provides Internet connectivity to your HD video monitor system. It serves as a communication channel between your baby unit and mobile device, allowing you to monitor and/or control your baby unit wherever you are. For more details, see **Download app for mobile access** section in this quick start guide.

CABLE MANAGEMENT



TECHNICAL SPECIFICATIONS

Frequency	Baby unit: 2402 - 2480 MHz (cover all WiFi, FHSS, BLE) Max Transmit power is 10mW (cover all WiFi, FHSS, BLE)
	Parent unit: 2406 - 2475 Mhz Max Transmit power is 100mW
LCD	7" Color LCD (IPS 1280x800 pixels)
Nominal effective range	Maximum power allowed by FCC and IC. Actual operating range may vary according to environmental conditions at the time of use.
Power requirement	Baby unit power adapter: Output: 5V DC, 1.5A. Parent unit power adapter: Output: 5V DC, 2A. Parent unit battery: 3.7V 5000mAh, 18.5Wh Lithium-ion battery

DISCLAIMER AND LIMITATION OF LIABILITY

VTech Communications, Inc. and its suppliers assume no responsibility for any damage or loss resulting from the use of this user's manual. VTech Communications, Inc. and its suppliers assume no responsibility for any loss or claims by third parties that may arise through the use of this product. Company: VTech Communications, Inc. Address: 9020 SW Washington Square Road - Ste 555 Tigard, OR 97223, United States Phone: 1 (800) 595-9511 in the U.S. or 1 (800) 267-7377 in Canada



Android™ and Google Play™ are trademarks of Google Inc. App Store is a trademark of Apple Inc., registered in the U.S. and other countries. IOS is a trademark or registered trademark of Cisco in the U.S. and other countries and is used under license.

Specifications are subject to change without notice. © 2024 VTech Communications, Inc. All rights reserved. 10/24. RM7766-XHD_QSG_V6

OVERVIEW

Baby unit overview

- Light sensor
- Camera lens
- Infrared LEDs
- Microphone
- Night Light
- Night Light Control Key
- LED indicator
- ON/OFF switch
- Speaker
- Temperature sensor
- Power jack
- Wall mount slots
- PAIR

Parent unit overview

- LINK LED light
- TALK / Arrow keys
- 3-level sound indicator light
- TALK / Arrow keys
- MENU | SELECT
- VOL - | VOL +
- Zoom
- Power | LCD ON/OFF
- Microphone
- Antenna
- Speaker
- Power jack
- RESET
- Stand

PARENT UNIT ICONS

Monitoring mode (For RM7766-2HD only)

- View baby units in Single mode.
- View baby units in Patrol mode (switch view every 10 seconds).
- View baby units in Split screen.

Night light

- On/Off: Toggle the night light on or off.
- Color: Select a night light color. Customized color is available if your baby unit is paired with MyVTech Baby Plus app.
- Brightness: Adjust the night light brightness. Set the brightness to AUTO adaptive ambience.
- Timer: Set the timer to turn the night light off after 15, 30 or 60 minutes, or always on.

Melodies and soothing sounds

- Play/Stop: Toggle between play and stop.
- Library: Select to play all melodies, or play one of the five melodies or five soothing sounds.
- Camera Volume: Adjusts baby unit speaker volume.
- Timer: Set the timer to stop playing after 15, 30 or 60 minutes, or play non-stop.

Alerts Settings

- Adjust alerts volume level.
- Motion Detect: Turn the motion detection alert on/off. Adjust Motion Sensitivity level for waking the parent unit screen.
- Temperature: Turn the temperature alert on/off. Select the temperature alert maximum and minimum temperature limits.
- Low Battery: Toggle the low battery alert on or off.
- Lost Link: Toggle the lost link alert on or off.

Help and info

- Help: Support Information
- How-to Video: Support video
- System Info: System Information

PROTECT YOUR PRIVACY AND ONLINE SECURITY

VTech cares about your privacy and peace of mind. That's why we've put together a list of industry-recommended best practices to help keep your wireless connection private and your devices protected when online. We recommend you carefully review and consider complying with the following tips.

Ensure your wireless connection is secure.

- Before installing a device, ensure your router's wireless signal is encrypted by selecting the "WPA2-PSK with AES" setting in your router's wireless security menu.

Change default settings.

- Change your wireless router's default wireless network name (SSID) to something unique.
- Change default passwords to unique, strong passwords. A strong password:
 - Is at least 10 characters long.
 - Is complex.
 - Does not contain dictionary words or personal information.
 - Contains a mix of uppercase letters, lowercase letters, special characters and numbers.

Keep your devices up to date.

- Download security patches from manufacturers as soon as they become available. This will ensure you always have the latest security updates.
- If the feature is available, enable automatic updates for future releases.

Disable Universal Plug and Play (UPnP) on your router.

- UPnP enabled on a router can limit the effectiveness of your firewall by allowing other network devices to open inbound ports without any intervention or approval from you. A virus or other malware program could use this function to compromise security for the entire network.

For more information on wireless connections and protecting your data, please review the following resources from industry experts:

- Federal Communications Commission: Wireless Connections and Bluetooth Security Tips – www.fcc.gov/consumers/guides/how-protect-yourself-online.
- U.S. Department of Homeland Security: Before You Connect a New Computer to the Internet – www.us-cert.gov/ncas/tips/ST15-003.
- Federal Trade Commission: Using IP Cameras Safely – <https://www.consumer.ftc.gov/articles/0382-using-ip-cameras-safely>.
- Wi-Fi Alliance: Discover Wi-Fi Security – <http://www.wi-fi.org/discover-wi-fi/security>.

Status icons

- Direct mode:** Parent unit and baby unit are connected to each other directly. Signal strength is indicated by the signal icon(s) on the right. The red bar(s) indicates no connection.
- Wi-Fi mode:** The signal icon(s) on the left indicate the baby unit is connected to a home Wi-Fi network. The red icon(s) indicates no connection. Baby unit 1 and 2 are being viewed in **Patrol mode** (For RM7766-2HD only). Baby unit 1 and 2 are being viewed in **Split mode** (For RM7766-2HD only).
- Night vision:** Night vision is turned on.
- Motion detection:** Motion detection alert is turned on.
- Melodies and soothing sounds:** Melodies and soothing sounds are playing.
- Night light:** Night light is turned on.
- Temperature alert:** Temperature alert is turned on.
- Parent unit muted:** Parent unit is muted.
- Temperature:** Temperature measured at baby unit.
- Battery level indicator:** Battery level indicator.
- Low battery indicator:** Low battery indicator.

